

VMC S344R

- 7.7 Roof System
- 7.8 Roof insulation
- 7.5 Eave Detail

- 4.5 Masonry Lintel
- 7.4 Head Flashing and Weep
- 5.1 Steel Lintel
- 8.1 Standard Window System

- 9.1 Standard Finishes
- 6.1 Wood blocking

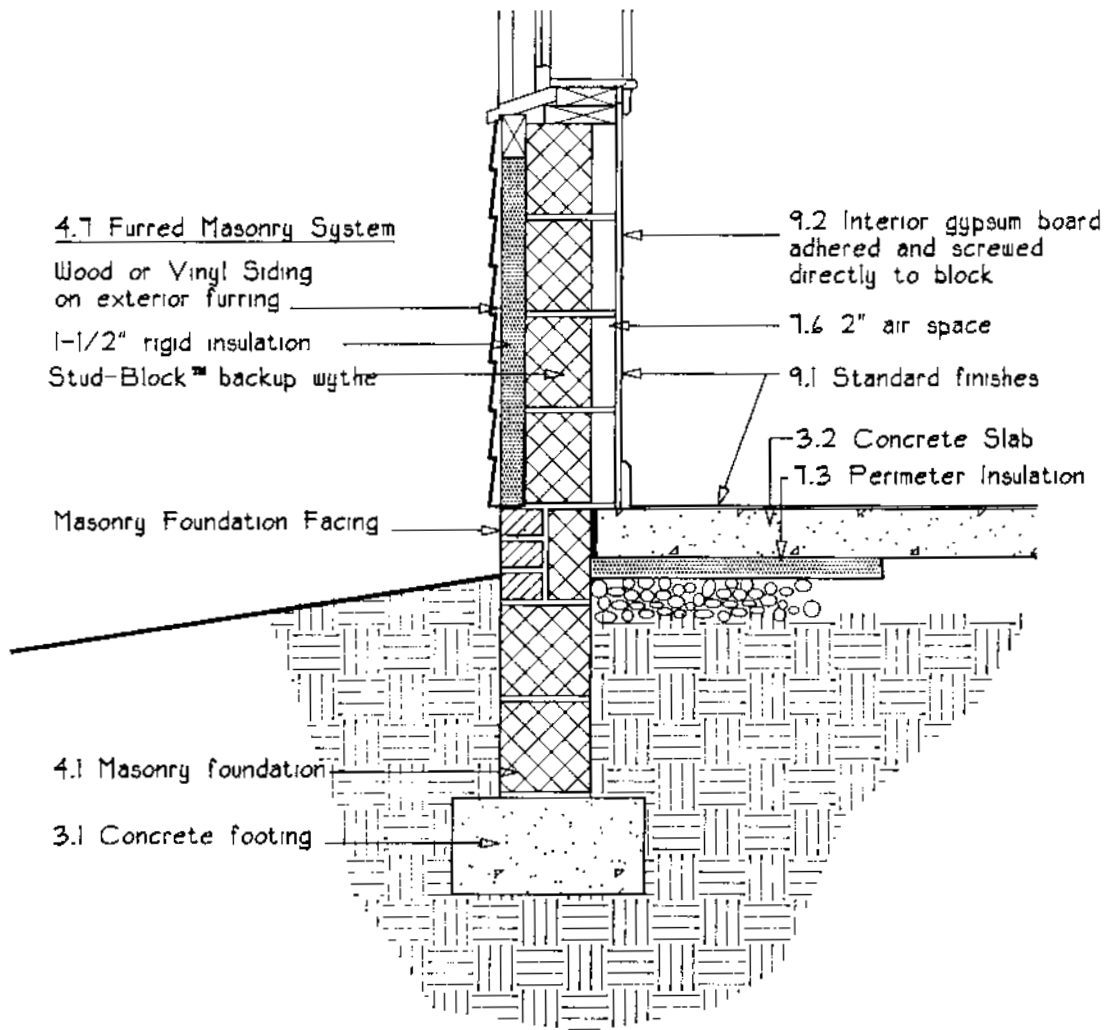
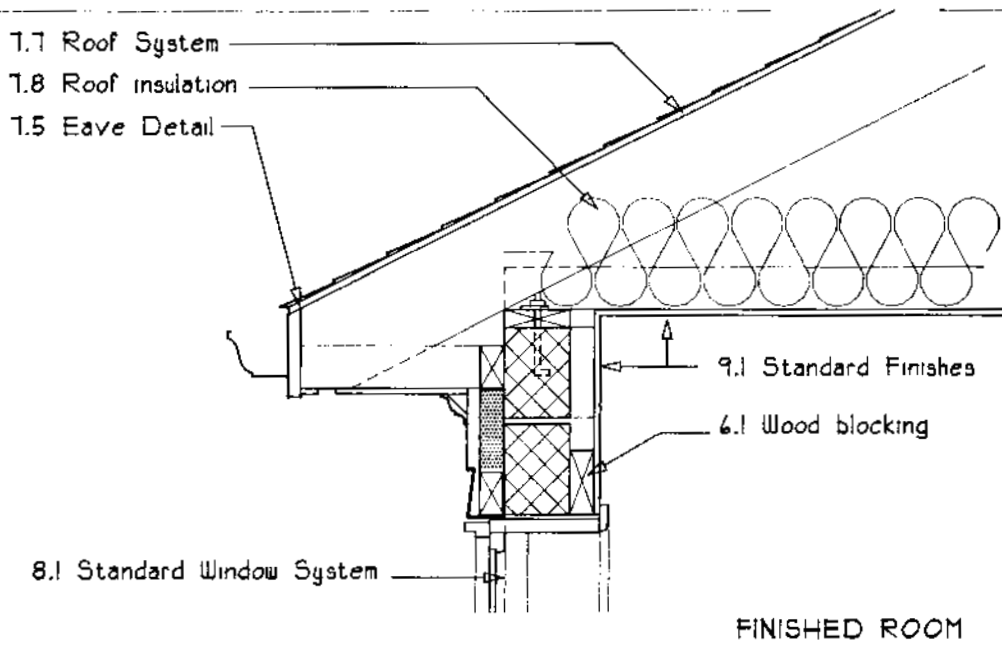
FINISHED ROOM

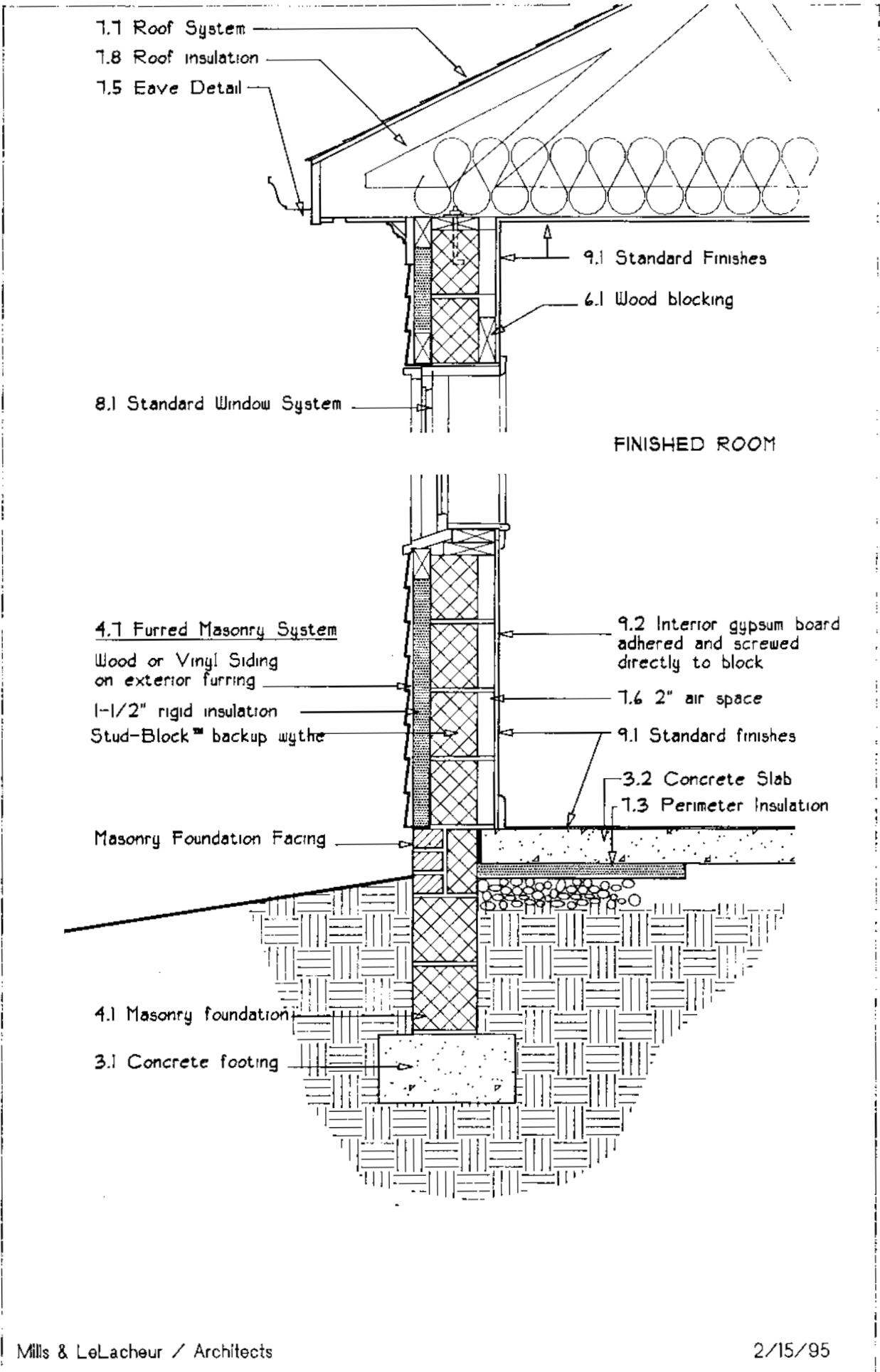
- 4.4 Masonry Sill
- 4.3 Masonry Cavity Wall:
Masonry Exterior Wythe
1" air space
1-1/2" rigid insulation
Stud-Block™ backup wythe

- 9.2 Interior gypsum board
adhered and screwed
directly to block
- 7.6 2" air space
- 9.1 Standard finishes
- 3.2 Concrete Slab
- 7.3 Perimeter Insulation

- 4.1 Masonry foundation
wall
- 3.1 Concrete footing

VMC S344T





1.1 Roof System
 1.8 Roof insulation
 1.5 Eave Detail

9.1 Standard Finishes
 6.1 Wood blocking

8.1 Standard Window System

FINISHED ROOM

4.1 Furred Masonry System
 Wood or Vinyl Siding
 on exterior furring
 1-1/2" rigid insulation
 Stud-Block™ backup wythe

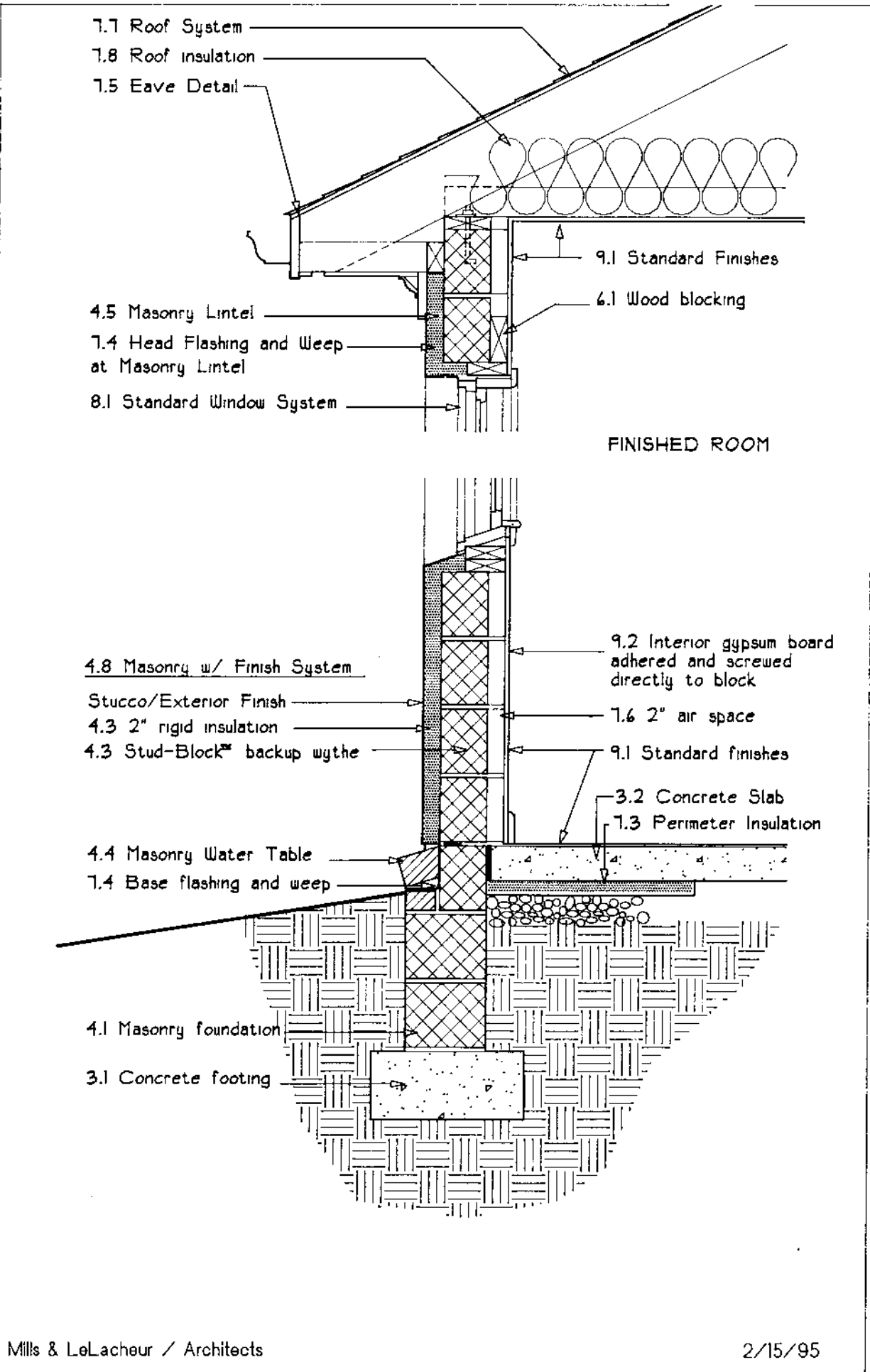
9.2 Interior gypsum board
 adhered and screwed
 directly to block
 1.6 2" air space
 9.1 Standard finishes

Masonry Foundation Facing

3.2 Concrete Slab
 1.3 Perimeter Insulation

4.1 Masonry foundation
 3.1 Concrete footing

VMC S346T



7.1 Roof System
 7.8 Roof insulation
 7.5 Eave Detail

4.5 Masonry Lintel
 7.4 Head Flashing and Weep
 at Masonry Lintel
 8.1 Standard Window System

9.1 Standard Finishes
 6.1 Wood blocking

FINISHED ROOM

4.8 Masonry w/ Finish System
 Stucco/Exterior Finish
 4.3 2" rigid insulation
 4.3 Stud-Block backup wythe

9.2 Interior gypsum board
 adhered and screwed
 directly to block
 7.6 2" air space
 9.1 Standard finishes

4.4 Masonry Water Table
 7.4 Base flashing and weep

3.2 Concrete Slab
 7.3 Perimeter Insulation

4.1 Masonry foundation
 3.1 Concrete footing

VMC S349R

- 7.1 Roof System
- 7.8 Roof insulation
- 7.5 Eave Detail

- 4.5 Masonry Lintel
- 7.4 Head Flashing and Weep at Masonry Lintel
- 8.1 Standard Window System

- 9.1 Standard Finishes
- 6.1 Wood blocking

FINISHED ROOM

- 4.8 Masonry w/ Finish System
- Stucco/Exterior Finish
- 4.3 2" rigid insulation
- 4.3 Stud-Block™ backup wythe

- 9.2 Interior gypsum board adhered and screwed directly to block
- 7.6 2" air space
- 9.1 Standard finishes

- 4.4 Masonry Water Table
- 7.4 Base flashing and weep

- 3.2 Concrete Slab
- 7.3 Perimeter Insulation

- 4.1 Masonry foundation
- 3.1 Concrete footing